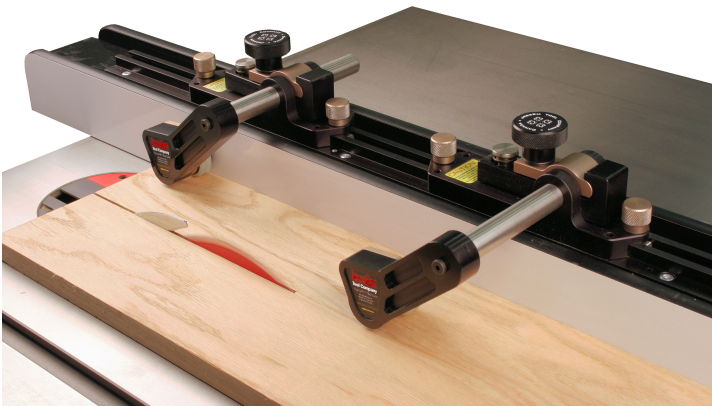


CLEAR CUT - TS™

Precision Stock Guides

for your Table Saw

Model #04301



Thank you for choosing this product from JessEm Tool Company. We appreciate your support and hope that our product serves you well. This product is designed to provide many years of reliable service, provided it is used as intended and taken care of.

This user manual will assist you in assembly and general operation of this product. It is not our intent to teach you about woodworking. It is assumed that you are an experienced woodworker with the basic skills and experience necessary to use this product safely. If after reading the following instructions, if you are unsure or uncomfortable about safely using this product we urge you to seek additional information through widely available woodworking books or classes.

As part of our Continuous Product Improvement Policy, JessEm Products are always advancing in design and function. Therefore there may be differences between what is shown in our catalogs, website or at retail display and what is sold at time of purchase. We reserve the right to make positive changes to our products at our discretion.

JessEm Tool Company

61 Forest Plain Road
Oro-Medonte, Ontario, Canada
L3V 0R4
Toll Free: 1-800-436-6799
Local: 705-726-8233
Fax: 705-327-0295
Email: jessem@jessem.com
Website: www.jessem.com

IMPORTANT

Read and understand the contents of this manual before assembly or operation of this product.

IMPORTANT SAFETY PRECAUTIONS

- Before operating any table saw, read and understand all safety instructions in the owners manual that came with the saw.
- If you do not have a manual, contact the manufacturer and obtain one before using any power tool.
- Always wear eye protection in compliance with ANSI safety standards when operating any power tool.
- Always use proper guards and safety devices when operating power tools and machinery.
- Carefully check saw blades before each use. Do not use if damage or defect is suspected.
- Do not wear loose clothing or jewelry that may catch on tools or equipment.
- Unplug the tool or machine when mounting or making any adjustments to mechanical performance



***THERE ARE A FEW VERY IMPORTANT POINTS TO REMEMBER
WHEN ADJUSTING YOUR STOCK GUIDES INTO POSITION.***



#1 NEVER PLACE THE OUTFEED STOCK GUIDE ON THE SIDE OF THE CUT OPPOSITE TO THE FENCE. YOUR STOCK GUIDES STEER THE STOCK INTO THE FENCE AND IF THE OUTFEED GUIDE WAS PLACED ON THE OPPOSITE SIDE OF THE CUT TO THE FENCE, IT WOULD EFFECTIVELY STEER YOUR WORK INTO THE BLADE CAUSING IT TO BIND ON THE BLADE AND POSSIBLY CREATING A DANGEROUS SITUATION WHERE THE STOCK COULD KICK BACK TOWARD THE OPERATOR!



#2 ALWAYS ENSURE THE STOCK GUIDES WILL NOT CONTACT THE BLADE THROUGHTOUT THEIR ADJUSTMENT UP AND DOWN. WE RECOMMEND THAT THE STOCK GUIDES ARE ALWAYS AT A MINIMUM 2 INCHES FROM CONTACTING THE BLADE. THE INFEED STOCK GUIDE SHOULD BE 2 INCHES TOWARD THE FRONT OF THE SAW AWAY FROM THE BLADE AND THE OUTFEED SHOULD BE 2 INCHES TOWARD THE BACK OF THE SAW AWAY FROM THE BLADE!



#3 ALWAYS ENSURE THE TRACK KNOBS AND THE CLAMPING KNOB IS SECURELY TIGHTENED BEFORE TURNING ON THE SAW. ONCE THESE KNOBS ARE SECURED WE ADVISE LIFTING THE STOCK GUIDE ARM UP AGAINST THE SPRING PRESSURE TO ENSURE IT IS LOCKED IN THIS POSITION. YOU SHOULD NOT BE ABLE TO MOVE THE ADJUSTMENT OF THE STOCK GUIDE ARM WITH A REASONABLE AMOUNT OF FORCE.



#4 ALWAYS HAVE NECESSARY SAFETY DEVICES LIKE A PUSH STICK CLOSE AT HAND WHEN STARTING YOUR CUT TO ENSURE YOU CAN COMPLETE YOUR CUT IN ONE GO AND TO ENSURE YOU DO NOT PUT YOUR HANDS UNCOMFORTABLY CLOSE TO THE ROTATING BLADE.



#5 ALWAYS OPERATE YOUR SAW WITH THE PROPER SAFETY GUARDING IN PLACE OR WITH A RIVING KNIFE IF YOUR SAW HAS ONE. YOUR STOCK GUIDES ARE DESIGNED TO PROVIDE ADDITIONAL SAFETY AND QUALITY OF YOUR WORK BUT ARE NOT DESIGNED TO REPLACE THE SAFETY EQUIPMENT THAT CAME WITH YOUR SAW.

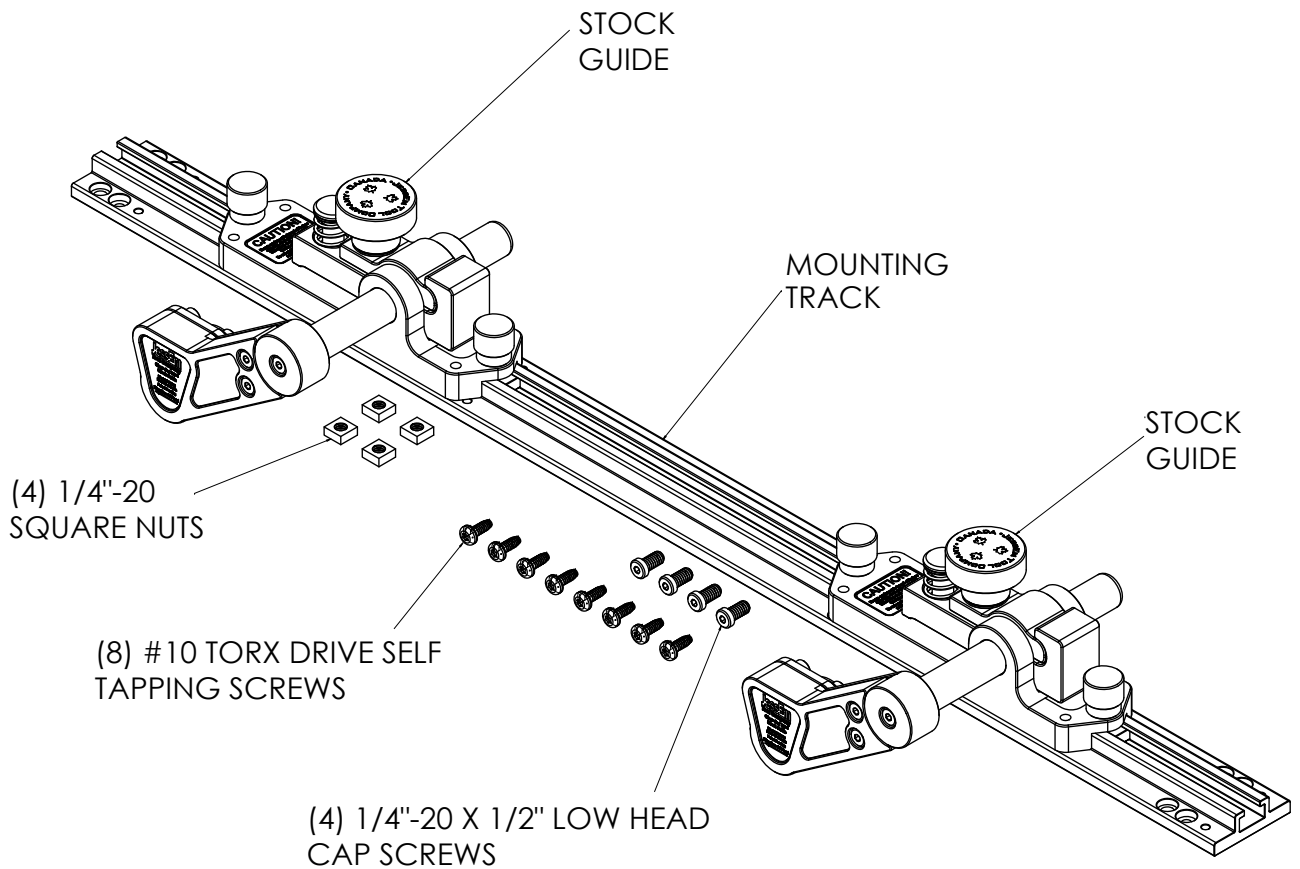


#6 YOUR STOCK GUIDES ARE DESIGNED TO MINIMIZE THE RISK OF KICK BACK FROM YOUR SAW WHEN USED PROPERLY. TO HELP PREVENT KICK BACK THEY ARE EQUIPPED WITH ONE WAY BEARINGS TO RESIST TRAVEL TOWARD THE OPERATOR. IN THE EVENT THAT YOUR STOCK DOES MOVE BACKWARD THE ROLLER WILL NOT SPIN IN THIS DIRECTION AND THE ROLLER ARM WILL PIVOT DOWN SLIGHTLY APPLYING MORE PRESSURE TO THE TIRES. IT IS RECOMMENDED TO ADJUST THE LENGTH OF THE PIVOT ARM SO THAT IT IS AT ROUGHLY A 30 DEGREE ANGLE WHEN IT IS TOUCHING YOUR TABLE SURFACE OR JUST ABOVE YOUR TABLE SURFACE. IF IT IS SET AT AN ANGLE LESS THAN THIS THEY WILL STILL FUNCTION PROPERLY BUT WILL APPLY MORE UPWARD PRESSURE TO YOUR FENCE AND MAY CAUSE YOUR FENCE TO LIFT SLIGHTLY OFF THE TABLE SURFACE.

CONTENTS

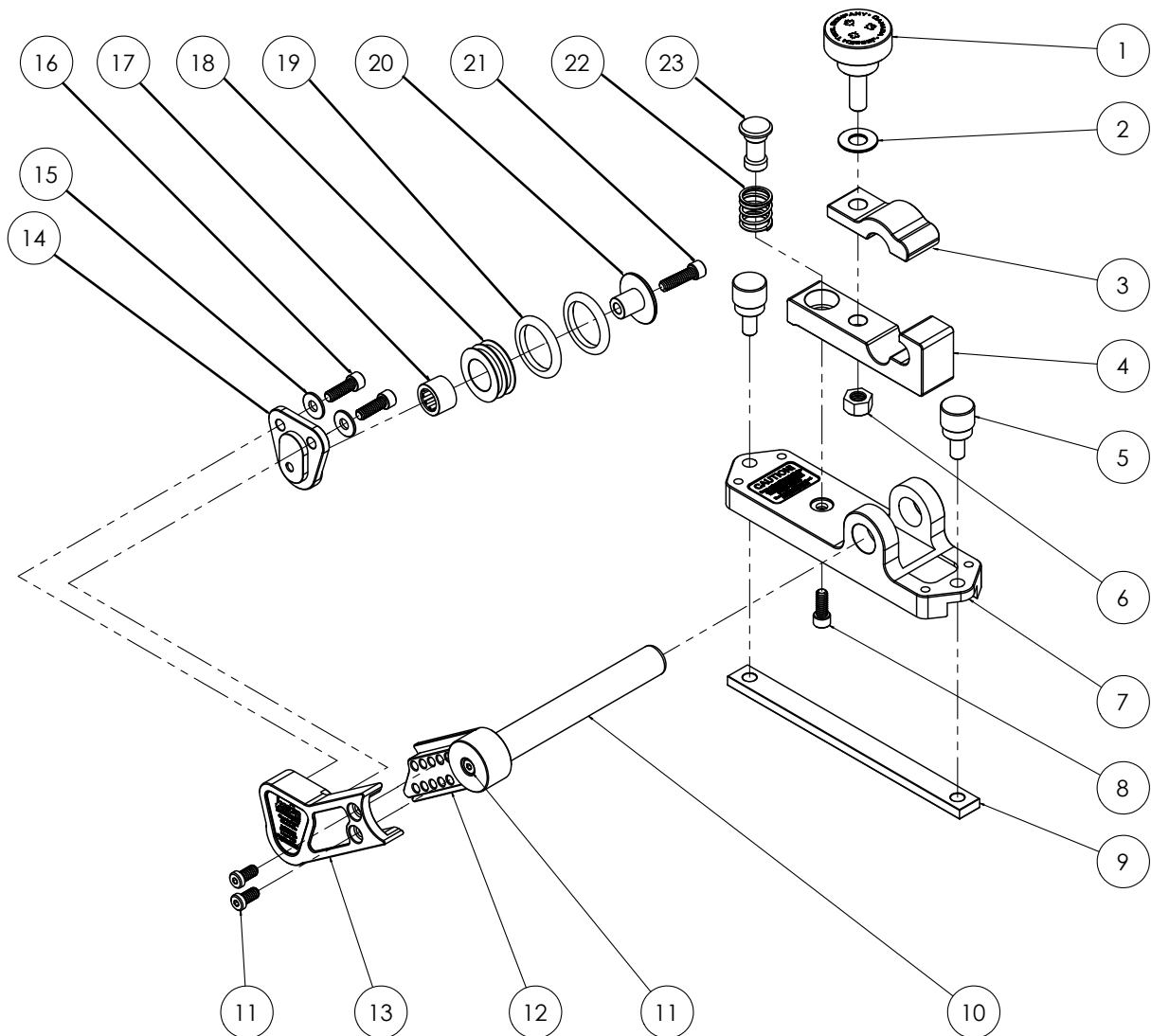
CONTENT OF BOXES		
QTY	PART #	DESCRIPTION
2	04301-A	Stock Guides
1	E0059-1-3	30" T-Track
8	F0307	#10 Self Tapping Screws
4	F0028	1/4-20 Square Nuts
4	F0153	1/4"-20 x 1/2" Low Head Socket Cap Screws

ASSEMBLY TOOLS INCLUDED		
1	M0310	T-25 Torx Screwdriver
1	M0045	1/8" Hex Key
1	M0325	#19 Drill Bit



EXPLODED PARTS VIEW

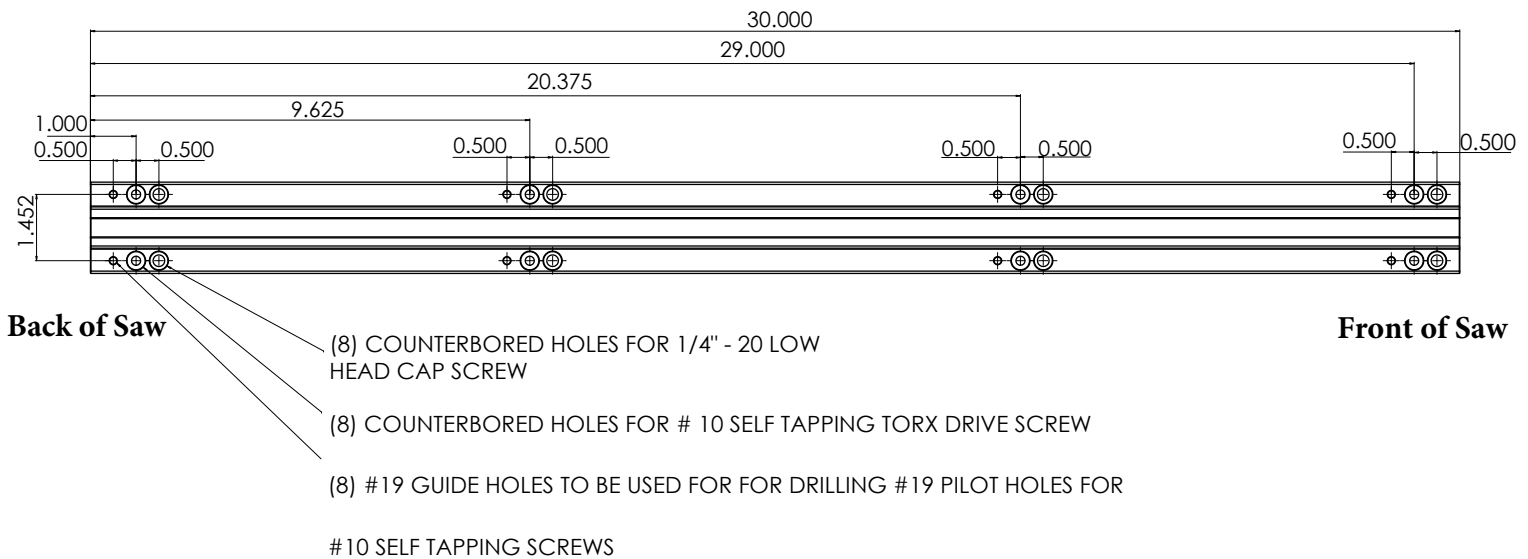
NO	PART #	DESCRIPTION	PER UNIT	PER SET
1	E0054-26-3	Clamping Knob	1	2
2	F0335	3/8" Stainless Flat Washer	1	2
3	E0092-1-6	Pivot Clamp	1	2
4	E0001-25-3	Pivot Bracket	2	4
5	E0210-5-6	Track Knob	1	2
6	F0336	3/8"- 24 Hex Nut	1	2
7	E0260-1-3	Base	1	2
8	F0130	1/4"-20 x 5/8 Socket Head Cap Screw	1	2
9	S0014-4	Track Mounting Bar	1	2
10	E0233-5	Adjustment Shaft	1	2
11	F0063	1/4"-20 x 1/2" Low Head Cap Screws	3	6
12	E0070-2-3	Upper Roller Bracket	1	2
13	E0070-1-3	Lower Roller Bracket	1	2
14	E0089-3-6	Roller Mount	1	2
15	F0270	1/4" Flat Washer	2	4
16	F0014	1/4-20 x 3/4" Socket Head Cap Screw	2	4
17	M0296	1/2" Clutch Bearing	1	2
18	M0301-1	Acetal Roller	1	2
19	M0307	Urethane Tire	2	4
20	S0047-5	Roller Axle	1	2
21	F0002	1/4"-20 x 7/8" Socket Head Cap Screw	1	2
22	M0324	Spring	1	2
23	E0233-6	Spring Retainer	1	2



INSTALLING YOUR CLEAR-CUT STOCK GUIDES TS

Your Clear-Cut TS Stock Guides come with a 30” track for mounting your stock guides to your table saw or router table fence. The track has three sets of eight holes on the track. One set is used as a guide for drilling the pilot holes for using the self tapping screws. The second set is for use with the #10 self tapping screws and the third set is for use with the 1/4” – 20 Low Head Cap Screws when mounting the track to a standard 1/4” t-slot track common on router table fences and on some table saw fences. See **Figure #1** below that shows the layout of the three hole sets on the track.

FIGURE #1
TRACK MOUNTING HOLE LAYOUT



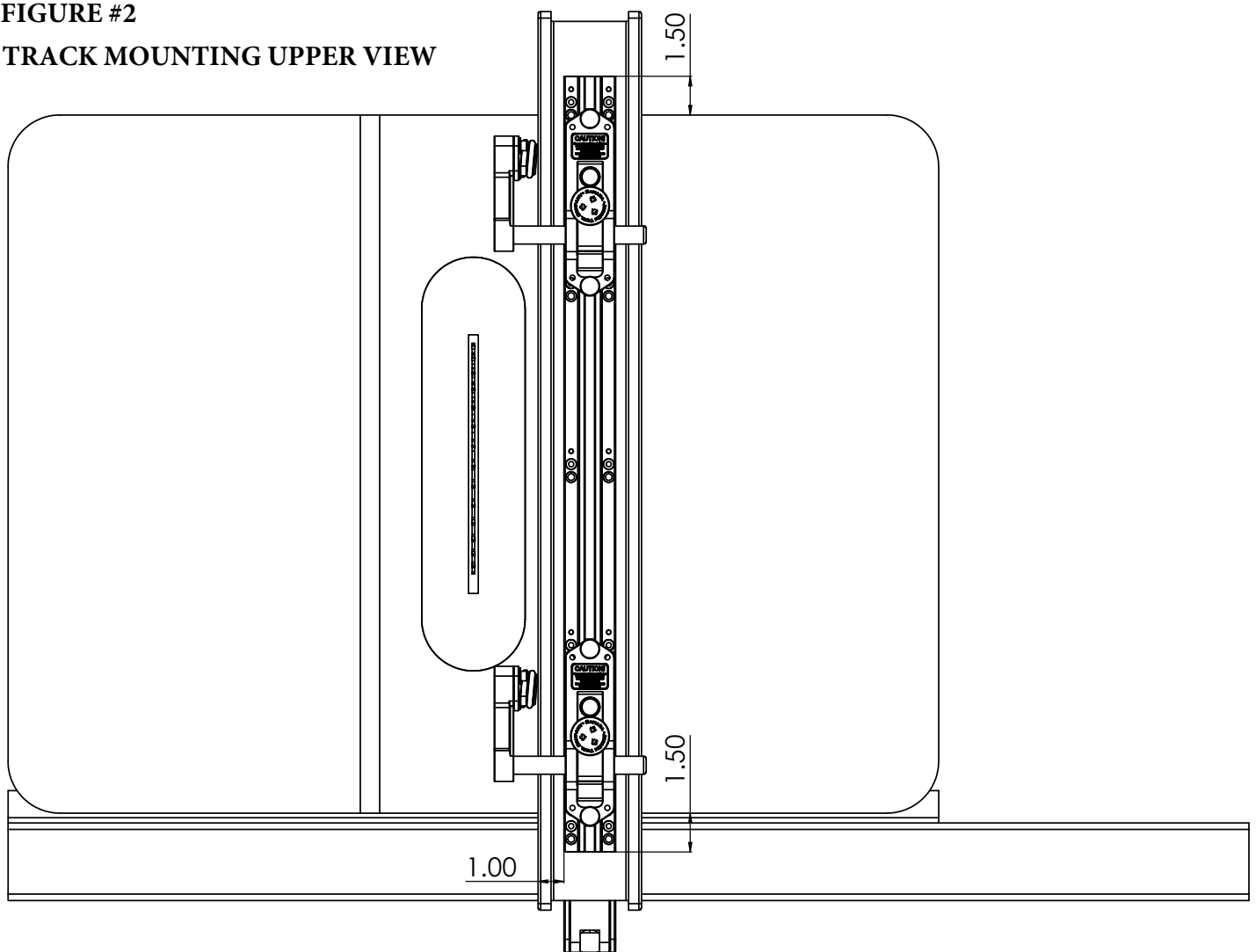
MOUNTING USING SELF TAPPING SCREWS

Most table saw fences are of the style that are made using square steel tubing with some type of plastic or laminate fence faces, this type of fence requires the use of self tapping screws to attach your Clear-Cut TS track to the fence. The track should be mounted to allow maximum travel in front and behind the blade. We have found that the best placement of the track is in the center of the table saw table, below the fence. The track can be mounted forward or backward of this position if desired.

A typical table saw top is 27” from front to back and the track is 30” so this would mean that the track should be mounted overhanging 1.5” on the front and back of the saw. (See **Figure #2**)

The track has eight #19 drill size holes to be used as a drill guides for pilot holes for the self tapping screws. These are the smallest holes on the track and should be closest to the back of your saw. These holes are $\frac{1}{2}$ " in from of the counter bored mounting holes for the self tapping screws. **One final note** in placing the track, if the outside edge of the track is placed a minimum of $\frac{3}{4}$ " from the edge of the table saw fence then the stock guides can be swung out of the way when not in use. If this is not possible then they can be removed from the track by just loosening the track knobs and sliding them off the track. Once the position of the track is determined to your satisfaction, move the track toward the front of the saw $\frac{1}{2}$ " and then clamp the track to your table saw fence in this position ensuring the track is parallel to the side of the fence. Using the included #19 drill bit and either a hand held drill or using a drill press, drill the eight holes into your fence using these #19 drill holes as a guide for your drill bit. Once the holes have been drilled, remove the clamps and clean or blow off the shavings from drilling the holes and place the track so the counterbored holes for the self tapping screws line up with the holes you just previously drilled. Using the included #10 torx drive self tapping screws and the included T-25 torx screwdriver attach the track to your table saw fence. (**Note: start all eight of the self tapping screws first before you tighten them to ensure that all line up before the track is tightened**)

FIGURE #2
TRACK MOUNTING UPPER VIEW



Now your track is installed and your stock guides can be slid onto the track. Your stock guides come with the track knobs already mounted and tightened to the track mounting block so you will need to loosen these knobs to allow the stock guides to slide on. (See exploded parts view for reference if needed) One stock guide should be mounted on the outfeed side of the blade and the other to the infeed side of the blade. The installation of your stock guides should now be complete.

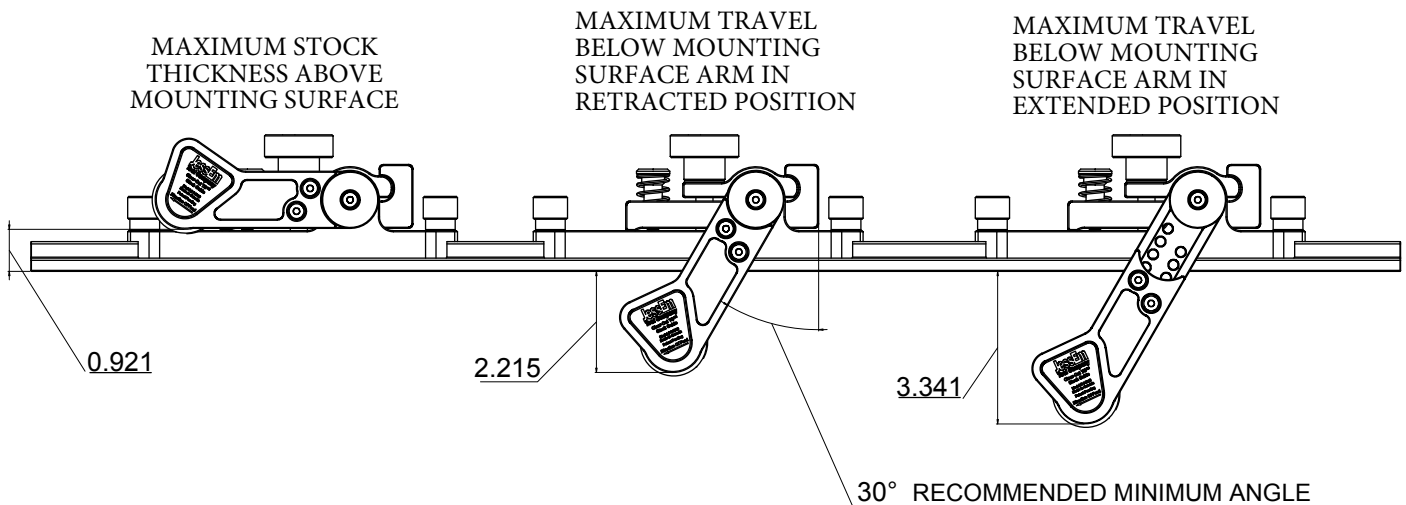
INSTALLING YOUR STOCK GUIDES TO A ROUTER TABLE OR TABLE SAW WITH AN UP TOP 1/4" T-SLOT

There is an additional set of eight (8) counter bored holes for use with the 1/4"-20 Low Head Cap Screws and the 1/4"-20 square nuts, but only one row will line up with your T-Slot. We have included four screws and four square nuts for use with these. Because there are two rows of these holes, it does not matter which side faces the front of your fence. To install on a top mounted T-Slot, slide the four square nuts roughly into position and then using the 1/8" hex key, screw in the four 1/4"-20 Low Head Cap Screws through the track and into the nuts. Slide the track for best placement on both sides of your router bit or table saw blade and tighten these screws. Loosen the track knobs on each stock guide enough to allow it to slide onto the track. Position the stock guide and re-tighten the track knobs.

ADJUSTING THE LENGTH OF THE ROLLER ARM ON YOUR CLEAR-CUT STOCK GUIDES

The roller arm is adjustable to five different positions and can be extended 1.3" from the fully retracted position it is shipped in. On the most common table saw fences the fully retracted position as it is shipped is the correct setting. On some higher fences or on a router table fence which is typically higher than a table saw fence the stock guides need to be extended. The ideal position for cutting with your stock guides is for the roller arm to be at approximately a 30 degree angle from vertical or greater. (See *Figure #3*) They will work at less of an angle but will apply more lifting force to the fence in the case of kick back. Once the length of the roller arm is set thicker stock will be cut with the stock guides at a greater angle. If your stock guides need to be adjusted to reach your table saw or router table surface then using the 1/8" hex key provided remove the two 1/4"-20 X 1/2" Low Head Cap Screws on the roller arm and adjust the arm outward till the desired setting is reached. Then re-insert and tighten these screws just previously removed. Once they are adjusted the ideal angle of the roller arm should be roughly 30 degrees from vertical when touching or close to your table surface or the minimum stock thickness you would cut with your saw.

FIGURE #3



USING YOUR CLEAR-CUT TS STOCK GUIDES

Step one in using your new stock guides is to position the stock guides. One on the infeed side and the other on the outfeed side. They should be adjusted to **ENSURE THAT THE ROLLER IS CLEAR OF THE BLADE ON BOTH THE INFEED AND OUTFEED SIDE**. Once they are set in the desirable position from front to back the track knobs can be tightened. See **Figure #5** on page 9 for proper positioning of your stock guides.

The next step is to adjust the height of each stock guide. This is done by loosening the clamping knob and raising or lowering the stock guide and placing the outward edge of the stock guide (the portion with the JessEm decal on it) on top of your stock. Also, at this stage, the guide can be adjusted to the left or right of the fence depending on the distance the fence is from the blade. If there is plenty of clearance from the blade to the fence then the stock guide can be set further away from the fence which will help hold your work piece more securely to the table saw surface. (See **Figure #4** below for mounting distances) If your fence is close to the blade the stock guide can be positioned close to the fence providing clearance from the blade. Once this is done then securely tighten the clamping knob. This outward radius edge of the stock guide is slightly higher than the contact surface of the tires and by tightening the stock guide in this position it ensures the correct amount of spring pressure and travel on your stock.

FIGURE #4

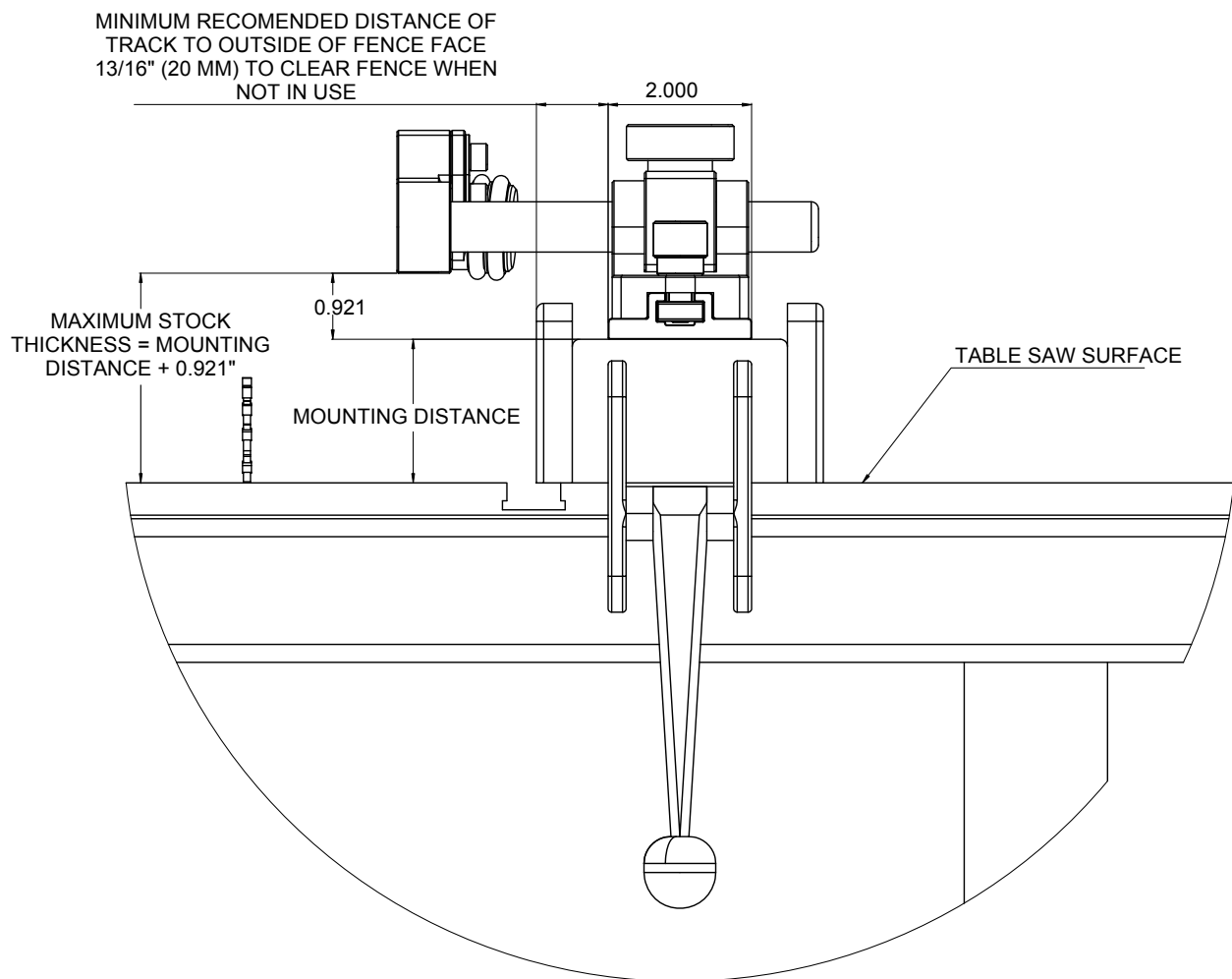
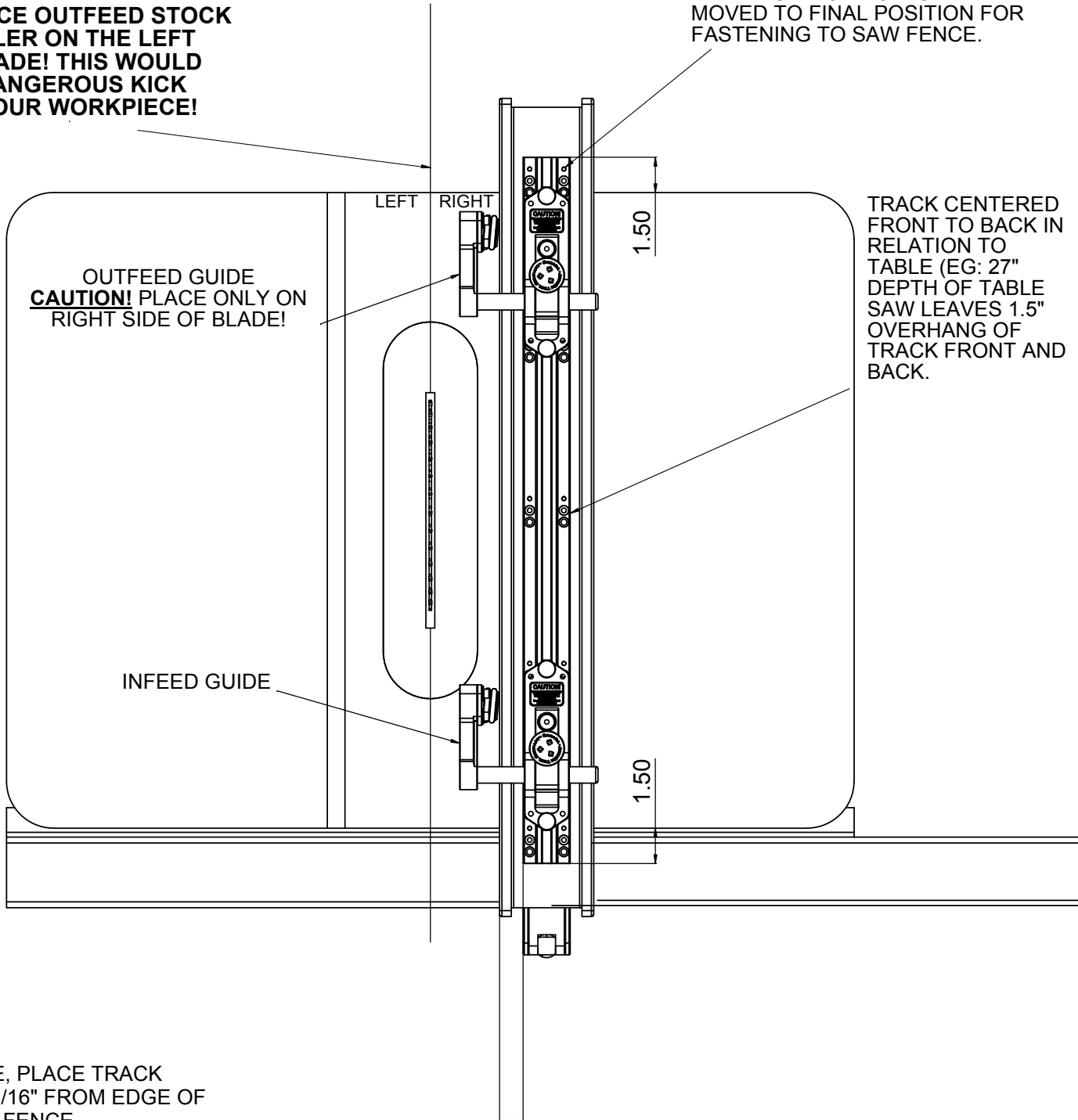


FIGURE #5

CAUTION!

NEVER PLACE OUTFEED STOCK GUIDE ROLLER ON THE LEFT SIDE OF BLADE! THIS WOULD CAUSE A DANGEROUS KICK BACK OF YOUR WORKPIECE!

#19 DRILL HOLES AT BACK OF FENCE. THESE HOLES USED AS GUIDES FOR DRILLING #19 PILOT HOLES FOR SELF TAPPING SCREWS. TRACK TO BE MOVED TOWARD FRONT OF SAW 1/2" FROM FINAL POSITION FOR DRILLING PILOT HOLES THEN MOVED TO FINAL POSITION FOR FASTENING TO SAW FENCE.



OUTFEED GUIDE
CAUTION! PLACE ONLY ON
RIGHT SIDE OF BLADE!

INFEED GUIDE

LEFT RIGHT

1.50

TRACK CENTERED
FRONT TO BACK IN
RELATION TO
TABLE (EG: 27"
DEPTH OF TABLE
SAW LEAVES 1.5"
OVERHANG OF
TRACK FRONT AND
BACK.

1.50

IF POSSIBLE, PLACE TRACK
MINIMUM 13/16" FROM EDGE OF
TABLE SAW FENCE
TO ALLOW GUIDE TO PIVOT OUT
OF WAY WHEN NOT IN USE.

JESSEM TOOL LIMITED WARRANTY

All JessEm products are warranted to be free from defects in material and workmanship. JessEm will repair or replace any product which upon inspection proves to be defective for a period of (1) year from dated receipt and proof of purchase. All warranty claims should be made direct to JessEm Tool Company. Contact JessEm for a warranty claim return authorization and instructions to proceed. The consumer is responsible for shipping costs to return product to JessEm Tool Company. We will repair or replace the product at our discretion and JessEm Tool will return shipment to you at no charge.

JessEm Tool Company

Toll Free: 1-866-272-7492

Fax: 705-327-0295

Email: jessem@jessem.com

WARRANTY LIMITATIONS

This warranty does not cover:

- Repairs or alterations made or attempted by anyone other than JessEm Tool Company or an authorized JessEm service professional
- Normal wear and tear.
- Abuse, misuse or neglect.
- Improper care or maintenance.
- Continued use after partial failure.
- Products that have been modified in any way.
- Products used with improper accessories.