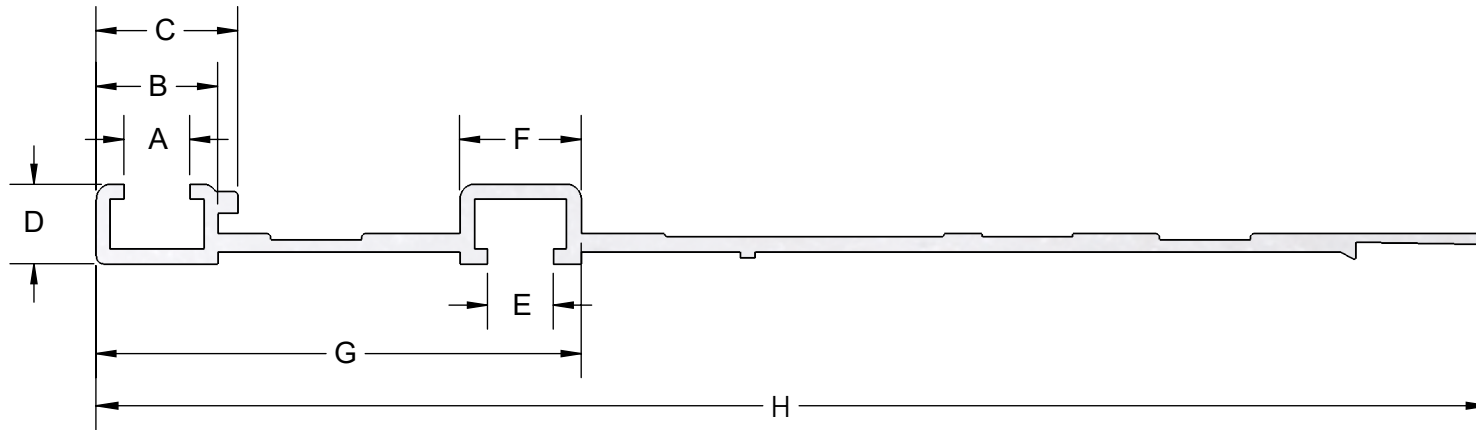


GUIDE RAIL BRANDS COMPARISON



DIMENSIONS IN MM								
BRAND	A	B	C	D	E	F	G	H
Festool	8.30	16.10	N/A	10.50	8.30	16.10	64.20	184.20
Makita	8.67	15.85	18.92	10.28	8.74	15.75	64.12	182.50
Triton	8.83	15.65	19.66	10.40	8.85	15.74	63.65	182.50
PowerTec	8.65	15.89	18.59	10.50	8.66	15.79	63.74	182.50
Kreg	8.53	15.85	N/A	10.88	8.53	15.83	84.97	183.64

This comparison chart is intended as an aid to woodworkers to help respond to FAQ's posed to us. The data is based on field measurements taken by TSO Products from a small number of commercially available guide rails. The data is not intended to be a definitive document - just a quick reference guide to identify key differences. These dimensions shown do not address the question of tolerances adhered to by the respective manufacturers.

TSO Products recommends staying with the same brand when connecting separate guide rails.

TSO Products does not warrant nor make any representations as to the validity of the data or any unintended errors.

TSO Products, LLC
Customer Service Department

August 31, 2021