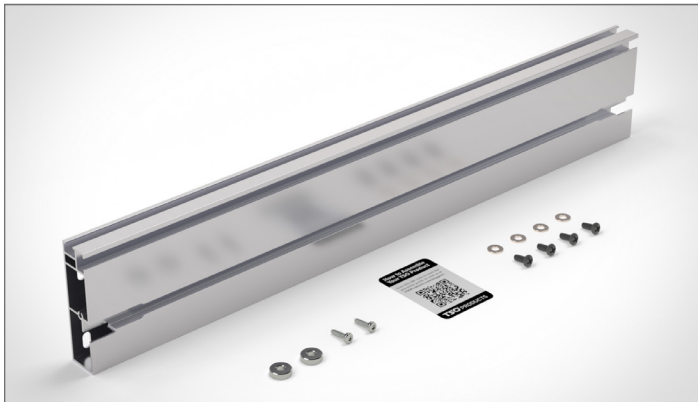


UPGRADED RIP FENCE FOR DEWALT 10" JOBSITE TABLE SAW ASSEMBLY INSTRUCTIONS

TSO™ PRODUCTS



Thanks for purchasing this genuine TSO Product.

Questions? Suggestions? Ideas? We thrive on your feedback! Contact us toll-free at 800-727-0311 (U.S.), 239-236-5526 (international), email us at info@tsoproducts.com, or visit www.tsoproducts.com/support for a copy of this guide.

⚠ DANGER

Danger indicates a hazardous situation that, if not avoided, will result in death or serious injury.

⚠ WARNING

Warning indicates a hazardous situation that, if not avoided, could result in death or serious injury.

⚠ CAUTION

Caution indicates a hazardous situation that, if not avoided, may result in minor or moderate injury or property damage.

NOTICE

Notice indicates important or helpful information and/or user tips.

ESSENTIAL SAFETY WARNINGS

This product is intended and designed for use only in conjunction with the DeWalt® DWE7491RS 10" Jobsite Table Saw, Types 1, 2, 3, and 10. The DeWalt Instructional Manual for the DWE7491RS also applies in connection with the use of this TSO Products Upgrade Rip Fence.

⚠ CAUTION

The content of this assembly guide is provided solely for the purpose of assembling the product. It is not intended to serve as a comprehensive instruction manual or to provide guidance on the safe operation of power tools, including but not limited to saws. Users are expected to have full knowledge of and adhere to the safety and operational instructions provided by the manufacturer of any power tools they operate.

Failure to consult the manufacturer's original instructions for safe operation and handling of power tools may result in serious injury, damage, or death. The manufacturer of this product and the author of this assembly guide assume no liability for any injuries or damages arising from improper use of power tools or failure to follow appropriate safety procedures. Always refer to and follow the specific safety guidelines provided by the manufacturer of your tools.

Woodworking involves a variety of injury risks which you can reduce with proper use of Personal Protective Equipment (PPE) and adherence to safe work practices.

UPGRADED RIP FENCE FOR DEWALT 10" JOBSITE TABLE SAW ASSEMBLY INSTRUCTIONS

Contents

Compatible Table Saws	2
Tools Needed for Assembly	2
What's Included in the Box	2
Step 1: Disassemble DeWalt Fence	2
Step 2: Install TSO Upgraded Rip Fence	4
Questions, Comments, or Ideas?	6

Compatible Table Saws

Before starting, confirm your table saw is listed below.

- DWE7491RS - Type 1
- DWE7491RS - Type 2
- DWE7491RS - Type 3
- DWE7491RS - Type 10

To determine the "Type" of your saw, review the product label on the saw. The "Type" designation should be located adjacent to the model number.

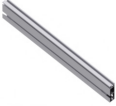





Tools Needed for Assembly

Use the following additional tools to complete all installation steps:

- Phillips #2 Screwdriver
- Torx T20 Screwdriver
- Cordless Drill (optional, for faster assembly)

What's Included in the Box

Your box should include multiple individual bags of hardware. Ensure you have the following parts and quantities:

Parts List			
			
1 qty. Rip Fence	2 qty. T20 Thread Forming Screws	4 qty. Phillips Thread Forming Screws ¹	4 qty. Stainless #12 Washers ¹
			
2 qty. Metal Spacers ²	1 qty. QR Code Sticker		

¹ Optional replacement hardware if holes in plastic bracket become stripped.

² Only used for attaching JessEm Clear-Cut FLEX Stock Guides to Rip Fence.

Step 1: Disassemble DeWalt Fence

⚠ WARNING

Disconnect power by unplugging your table saw before removing, installing, or modifying the rip fence or any accessories. Failure to do so may result in serious injury.



Step 1A. Unlock the fence levers located on the front and back of the *DeWalt Fence Assembly*.



Step 1B. Lift the *DeWalt Rip Fence* off the table and place on an flat tabletop.

UPGRADED RIP FENCE FOR DEWALT 10" JOBSITE TABLE SAW ASSEMBLY INSTRUCTIONS

TSO™ PRODUCTS

Step 1: Disassemble DeWalt Fence (Continued)



Step 1C. Remove Phillips Head Screw holding the Stock Support Bar to the DeWalt Fence Assembly. Repeat on the other side of the fence.



Step 1D. Remove the Stock Support Bar and set aside.

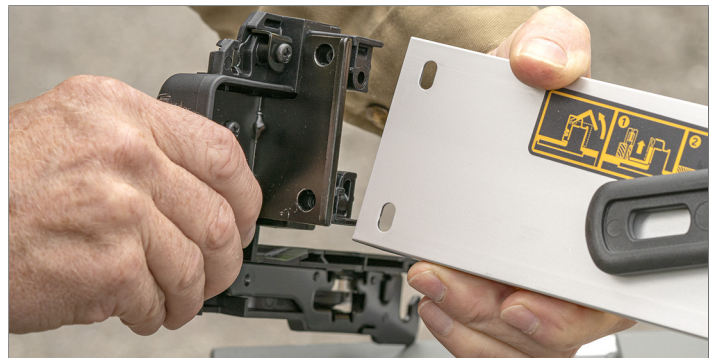


Step 1E. Remove T20 Torx Screw from the side of the DeWalt Rip Fence bracket. Repeat for the other bracket on the opposite side of the fence. **Tip: Use an electric drill or driver on low-speed setting to quickly remove these screws.**

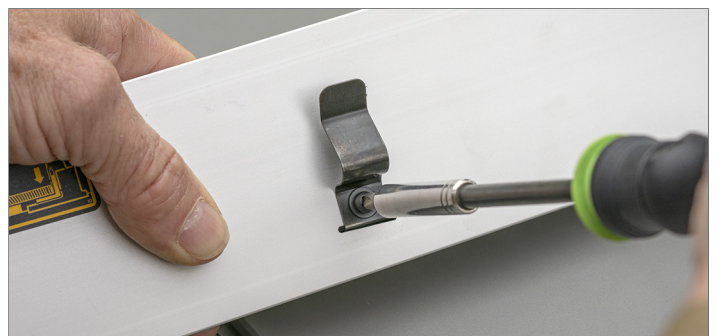
Step 1: Disassemble DeWalt Fence (Continued)



Step 1F. Remove two T20 Torx Screws from the back of the DeWalt Rip Fence bracket. Repeat for the other bracket on the opposite side of the fence.



Step 1G. Remove the bracket from the DeWalt Rip Fence extrusion by pulling it out. Repeat for the other bracket on the opposite side of the fence.



Step 1H. Remove Phillips Head Screws attaching both Push Stick Storage Tabs on back of DeWalt Fence Extrusion.

UPGRADED RIP FENCE FOR DEWALT 10" JOBSITE TABLE SAW ASSEMBLY INSTRUCTIONS

TSO™ PRODUCTS

Step 2: Install TSO Upgraded Rip Fence



Step 2A. Install the DeWalt Fence Brackets into the TSO Fence Extrusion. Ensure the fence's T-slots are facing outwards as shown in the image above. Repeat for the other bracket on the opposite end of the fence.



Step 2B. Install two T20 Torx Screws into the back of the DeWalt Fence Brackets and into the TSO Fence Extrusion. **Do not fully tighten at this stage.** Note: These screws engage into plastic, so carefully insert and feel for the existing threads to prevent cross-threading and avoid over-tightening as this can strip the plastic. If the holes in the plastic brackets become stripped, replace screws with larger Phillips Head Thread Forming Screws and Washers. Repeat for the other bracket on the opposite end of the fence.

Step 2: Install TSO Upgraded Rip Fence (Continued)



Step 2C. Using the T20 Thread Forming Screw included in the TSO product kit, screw through the end of the DeWalt Fence Bracket and into the TSO Fence Extrusion. This screw taps a thread while screwing, so you will feel more resistance. **Tip: Use an electric drill or driver on low speed setting to speed up this process, but be careful not to over tighten as this could result in damage to the DeWalt Fence Brackets.** Repeat for the other bracket on the opposite side of the fence.



Step 2D. With the DeWalt Fence Brackets still loose, mount the Fence Assembly onto the table saw and rotate the fence adjustment knob to test that nothing is binding and that it smoothly glides across the table.

UPGRADED RIP FENCE FOR DEWALT 10" JOBSITE TABLE SAW ASSEMBLY INSTRUCTIONS

TSO™ PRODUCTS

Step 2: Install TSO Upgraded Rip Fence (Continued)



Step 2E. Fully tighten the *T20 Thread Forming Screw* at the front of the *DeWalt Fence Bracket*. Repeat for the other fence bracket at the opposite side of the fence.

Step 2: Install TSO Upgraded Rip Fence (Continued)



Step 2G. Re-attach the two *Push Stick Mounting Tabs* using the slots on the back of the *TSO Fence Extrusion*. Hand tighten.



Step 2F. Fully tighten the two *T20 Torx Screws* (or larger *Phillips Head Thread Forming Screws*, if the plastic was stripped) on the back of the *DeWalt Fence Bracket*. Repeat for opposite side bracket.



Step 2H. Re-attach the *Stock Support Bar* and tighten the *Phillips Head Screw* at the front of the *DeWalt Fence Bracket*. Repeat for opposite side bracket. Fence assembly is complete.

UPGRADED RIP FENCE FOR DEWALT 10" JOBSITE TABLE SAW ASSEMBLY INSTRUCTIONS

TSO[™] PRODUCTS

Questions, Comments, or Ideas?

We thrive on your feedback, so please let us know if you have any comments, concerns, feedback, or ideas on how we can continuously improve our products.

We're easy to reach! In the United States, call us toll-free at 800-727-0311. For our international customers, call us at 239-236-5526. To send us a message, visit us at www.tsoproducts.com or email info@tsoproducts.com, and we'll get back to you as soon as possible.

DeWalt is a registered trademark of Stanley Black & Decker.