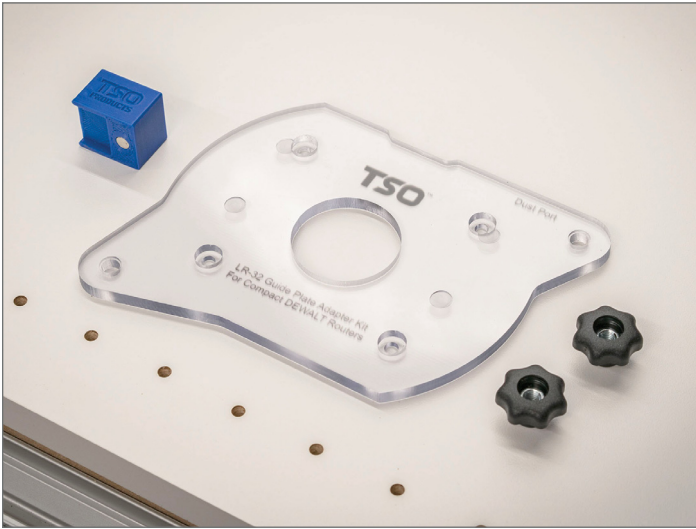


ASSEMBLY GUIDE: LR 32 GUIDE PLATE ADAPTER FOR COMPACT ROUTERS

TSO™ PRODUCTS

While the images shown in this manual depict a DeWalt router, the assembly and use of this kit is identical between the DeWalt and Makita adapter plates.



Thanks for purchasing this genuine TSO Product. Should you have any product questions or issues, please contact us toll-free at 800-727-0311 (U.S.), 239-236-5526 (international), email us at info@tsoproducts.com, or visit www.tsoproducts.com/support.

Before You Get Started — What's Required

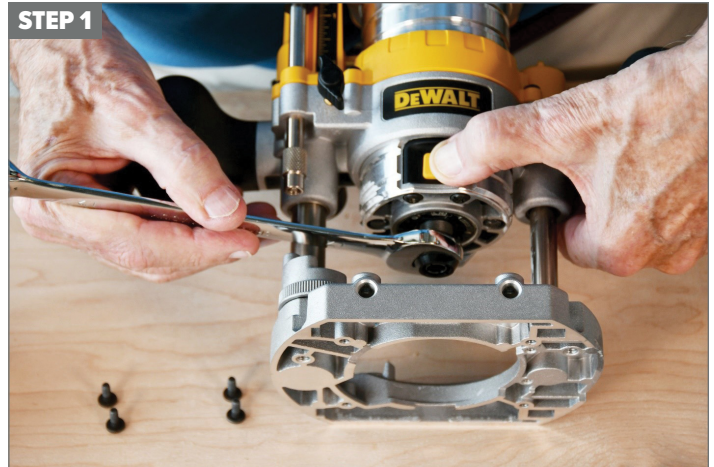
This Adapter Kit converts DeWalt compact routers for use with Festool's LR 32 Hole Drilling System. To make use of this kit, you will need:

- A compatible DeWalt compact router: either DCW600 or DCW611 models;
- A DeWalt DNP612 plunge base for the router;
- An 8mm collet for your router (not included in this kit, but [available separately](#));
- The Festool LR 32-SYS Hole Drilling Set (584100);
- And a compatible Festool LR 32 guide rail.

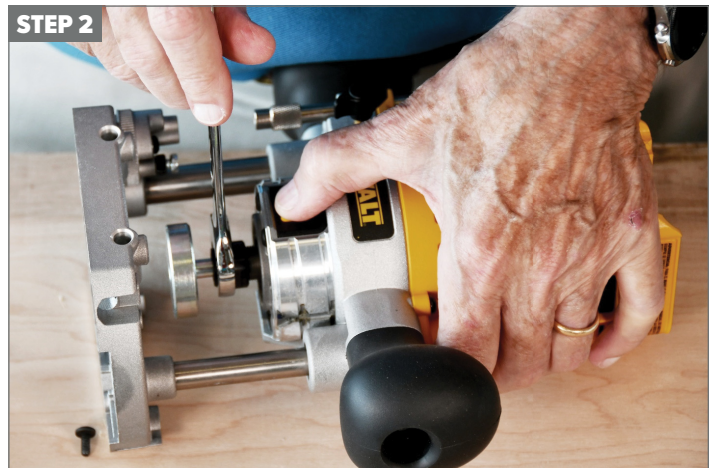
Questions, Comments or Ideas?

We thrive on your feedback, so please let us know if you have any comments, concerns, feedback, or ideas on how we can continuously improve our products.

We're easy to reach! In the United States, call us toll-free at 800-727-0311. For our international customers, call us at 239-236-5526. To send us a message, visit us at www.tsoproducts.com or email info@tsoproducts.com, and we'll get back to you as soon as possible.



Remove DeWalt router base plate, saving the four phillips head screws. Replace the 1/4" collet with 8mm collet using a 17mm open-end wrench included with your DeWalt router.



Insert Festool centering mandrel (with 8mm shaft) from LR 32 Set into 8mm collet and tighten.



Orient the transparent TSO Adapter Plate as shown.

ASSEMBLY GUIDE: LR 32 GUIDE PLATE ADAPTER FOR COMPACT ROUTERS

TSO™ PRODUCTS



STEP 4
Attach TSO Adapter Plate by re-using the four (4) phillips head screws, leaving them slightly loose.



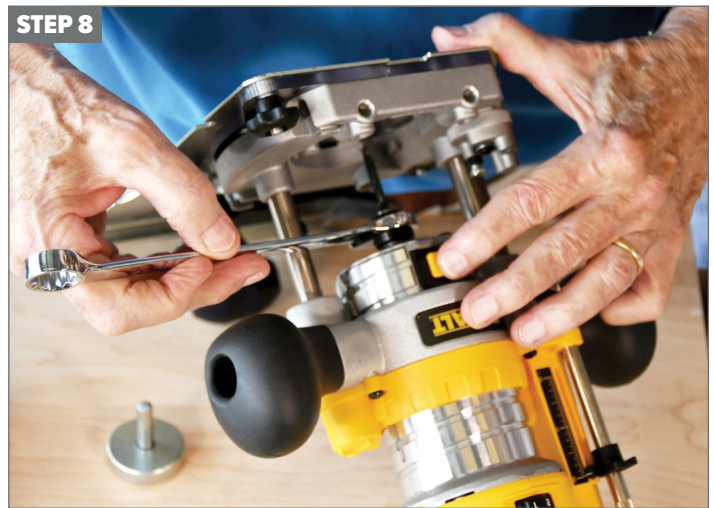
STEP 5
With the centering mandrel plunged through the TSO Adapter Plate, finish tightening the four (4) phillips head screws.



STEP 6
Place the Festool LR 32 Guide Plate on the router as shown, centering it over the mandrel.



STEP 7
Flipping over the router, place both TSO Star Knobs on the threaded studs of the LR 32 Guide Plate and tighten.



STEP 8
Remove the centering mandrel and replace with 5mm cutter (with 8mm shank), fully tightening the collet ready for use.

Routing Grooves, Dados or Rabbets

With the included TSO Pivot Block, the Festool LR 32 Guide Plate can also be used to route continuous grooves, dados and rabbets—perfect for accommodating casework backing or drawer bottoms. The Pivot Block features an integrated magnet and attaches underneath the guide plate lever, keeping the pin temporarily raised such that it will not engage the holes in the guide rail.



Follow the steps on the next page for using the Pivot Block.

ASSEMBLY GUIDE: LR 32 GUIDE PLATE ADAPTER FOR COMPACT ROUTERS

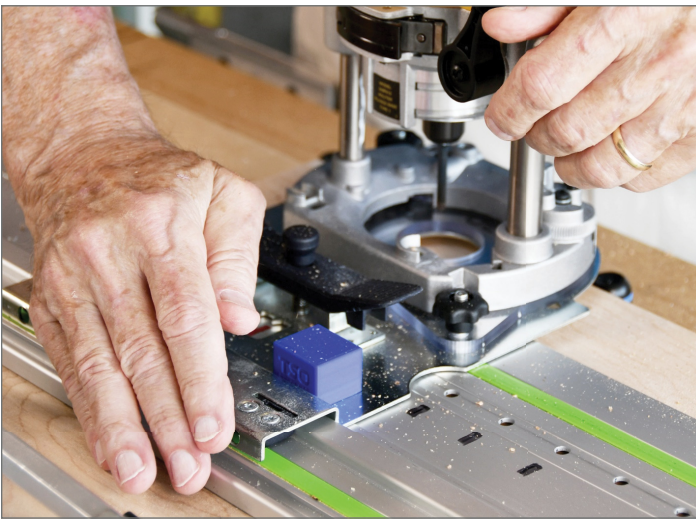
TSO™ PRODUCTS

Using the TSO Pivot Block



The TSO Pivot Block can be used to lock the Festool LR 32 Guide Plate pivot arm in the “up” position as shown when routing grooves, dados or rabbets.

Push the pivot arm toward the direction of the TSO Pivot Block placement for maximum lift clearance.



When not in use, store the TSO Pivot Block next to the Pivot Arm using its magnetic base.

One More Tip...

Before using the system, we recommend applying a non-silicon, low-friction coating or wax on the guide rail as well as underside the the Festool LR 32 Guide Plate, along the contact surfaces. You'll be impressed with the improvement!

