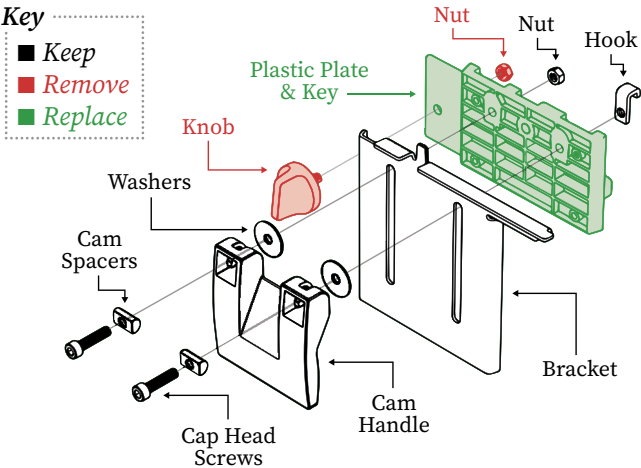


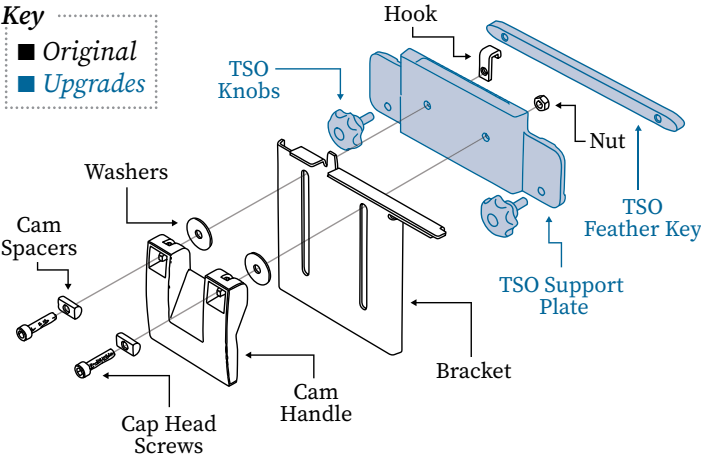


Thanks for purchasing this genuine TSO Product.
Questions? Suggestions? Ideas? We thrive on your feedback!
Contact us toll-free at 800-727-0311 (U.S.), 239-236-5526 (international), email us at info@tsoproducts.com, or visit www.tsoproducts.com/support to access all of our support resources, download these assembly instructions, or watch a video demonstration of the assembly process.

BEFORE: Original MFT/3 Front Support Bracket



AFTER: Upgraded MFT/3 Front Support Bracket



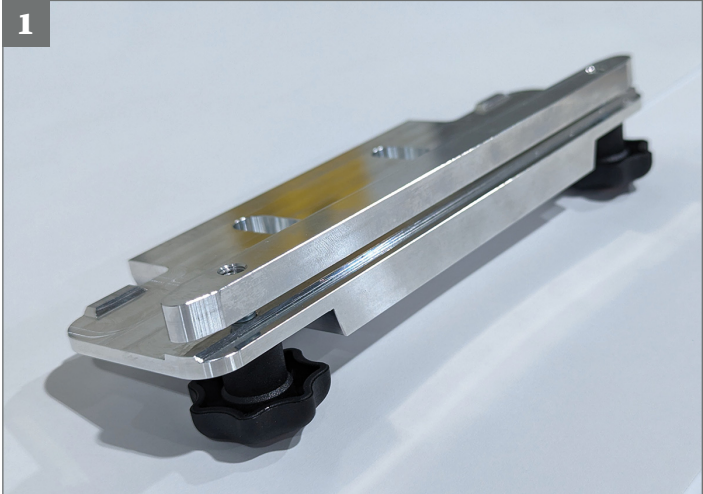
The MFT ALIGNED Guide Rail Support Upgrade Kit

The MFT ALIGNED upgrade to your existing Festool MFT/3 guide rail brackets provide improved performance and reliability for precision crosscuts. To provide a more cost-effective solution, the MFT ALIGNED brackets share some parts from the original Festool MFT/3 hinge bracket—shown in the diagram above. Before installing, you will need to assemble your MFT ALIGNED brackets following the instruction steps shown in this installation guide.

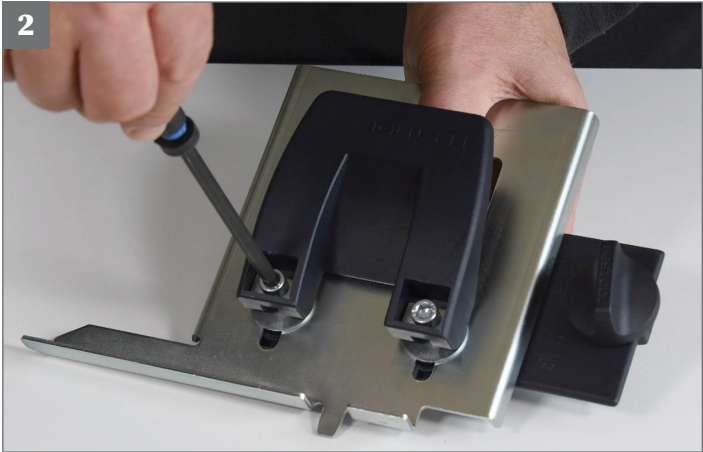
There are three basic components in the MFT ALIGNED kit: the *TSO Support Plate*, the *TSO Feather Key*, and the *TSO Knobs*. The two sets are identical and can be used on either the front or rear MFT/3 bracket. The assembly sequence is identical for both the front and rear MFT/3 brackets.

MFT ALIGNED Assembly Instructions

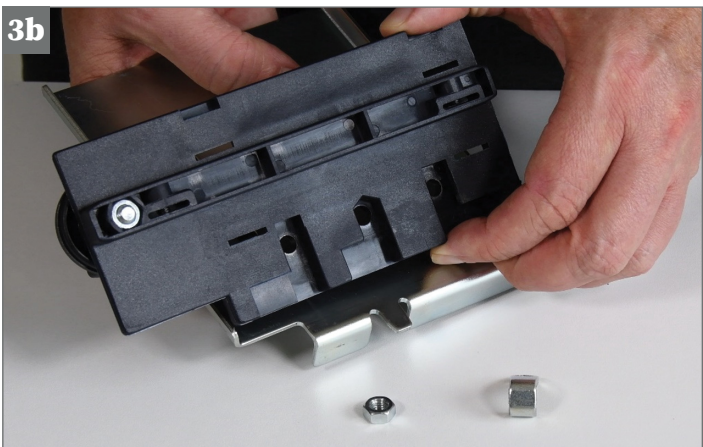
STEP 1: Assemble the two *TSO Support Plates*. The *TSO Feather Key* is attached to the side of the *TSO Support Plate* that has two slots in it, using the *TSO Knobs*.



STEP 2: Using a 5mm hex driver, loosen the two screws in the *Cam Handle* and allow the *Nut* and the *Hook* to drop off onto your work surface.

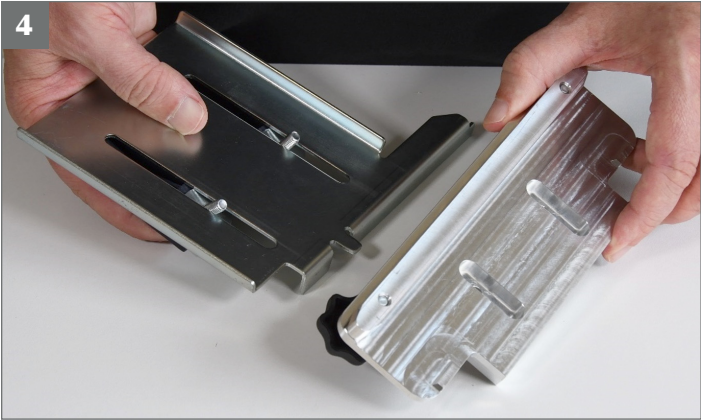


STEP 3: Place your fingers over the two screws in the *Cam Handle* and flip the assembly over. Next, remove the black *Plastic Plate & Key* while keeping your fingers on the *Cam Handle* screws.

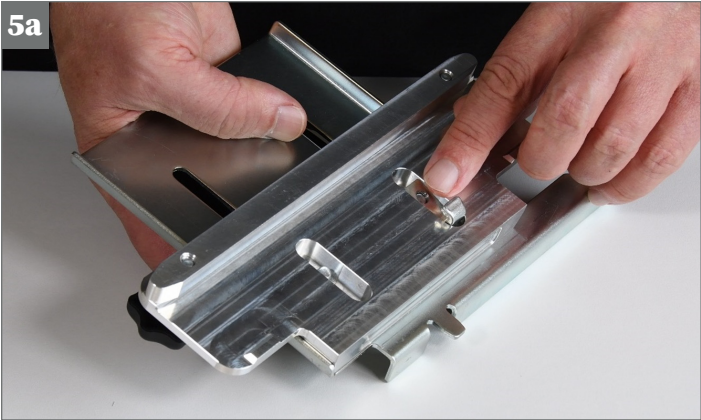


MFT ALIGNED
ASSEMBLY INSTRUCTIONS (CONTINUED)

STEP 4: With the side with the slots facing up, place the *TSO Support Plate* onto the *Bracket*, lining up with the two screws in the *Cam Handle*. Note the *TSO Knobs* and *TSO Feather Key* should be facing the bottom end of the *Bracket*.



STEP 5: Insert the *Hook*, facing up and out, into one of the slots and tighten down the screw with the hex driver. Next, insert the *Nut* in the other slot and tighten down. Only tighten until you start to feel resistance. *NOTE: With the new TSO components, it does not matter which slot the Nut and Hook are placed.*



The final assembly should look like this:

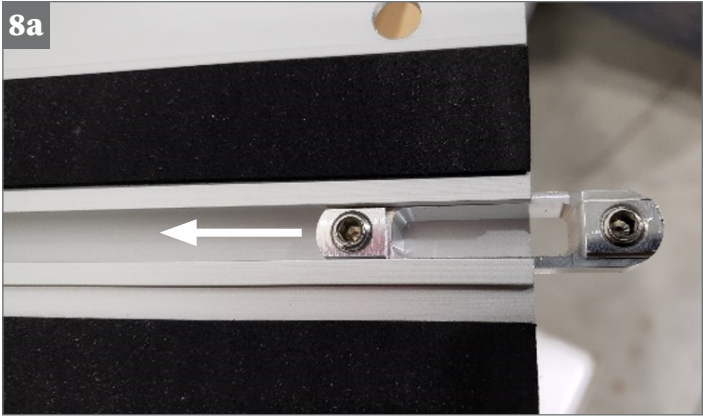


STEP 6: Repeat the process with the Hinged Back Support Bracket.

STEP 7: Insert the Front and Back Support Brackets into the MFT/3 side extrusions. Be sure the *Hook* on each assembly is properly seated over the top of each extrusion as seen in the image below. *NOTE: You will have to move the Extrusion Stop on one side and reposition it after squaring your Guide Rail.*



STEP 8: Insert the *Guide Rail Locator* into the bottom T-track of the MFT/3 guide rail. Position it along the guide rail so that it captures the Finger Feature of the MFT/3 Front Support Bracket and secure with a 3mm hex driver.



That's it! Enjoy your newly upgraded MFT/3.

Questions, Comments or Ideas?

We thrive on your feedback, so please let us know if you have any comments, concerns, feedback, or ideas on how we can continuously improve our products.

We're easy to reach! In the United States, call us toll-free at 800-727-0311. For our international customers, call us at 239-236-5526. To send us a message, visit us at www.tsoproducts.com or email info@tsoproducts.com, and we'll get back to you as soon as possible.