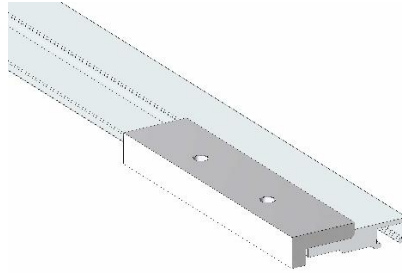




T-Track Drill Fixture Instructions

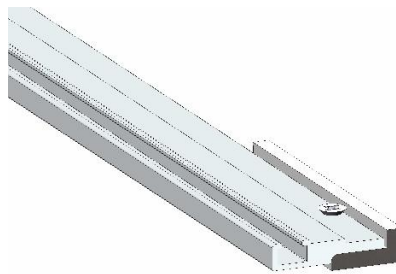
The original version of the T-Tracks had no holes in the end nearest the TSO logo. Later versions had one hole intended for hanging the T-Track for storage. Recently, a second hole was added to accommodate the use of a connector to join two T-Tracks. At the time of that change a drill fixture was offered to permit the accurate drilling of the holes required to use the connector. Following are instructions for using the drill fixture to aid in drilling the holes for each case.

T-Tracks without holes

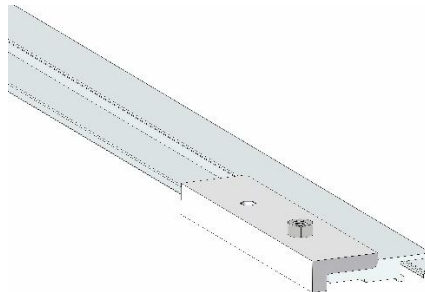


Clamp the drill fixture to the underside of the T-Track in the orientation shown with the end of the drill fixture flush with the end of the T-Track as shown above. Drill through both holes using a 6-mm diameter or 15/64-inch diameter bit. Deburr the holes.

T-Tracks with one hole



Fasten the drill fixture to the T-Track with the screw and nut provided with the screw oriented as shown above.



Clamp the fixture to assure that it won't move and drill through the hole using a 6-mm diameter or 15/64-inch diameter bit. Deburr the holes.