

TSO™ PRODUCTS

Flip Stop, TPG Series, Reversible LEFT / RIGHT Hand 61-277 A

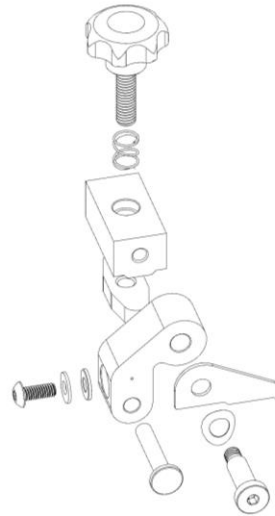
The parts in the RH and LH Flip Stops are the same.
So, changing the RH Flip Stop as provided to a LH is simple!

Using the 3 mm hex key provided, loosen and remove the Shoulder Screw holding the Flip Stop Arm, Cursor and Disc Spring in place.

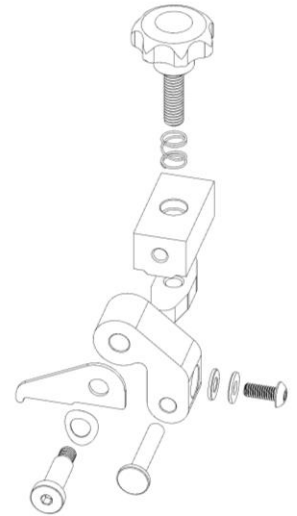
Then, reverse the Arm and Cursor and reassemble with the Disc Spring as shown and re-tighten the Shoulder Screw firmly.

Finally, using the 2.5 mm hex key provided, remove the Calibration Rod and re-insert as shown.

696-027 Rev. D



LH Flip Stop



RH Flip Stop

TSO™ PRODUCTS

Flip Stop, TPG Series, Reversible LEFT / RIGHT Hand 61-277 A

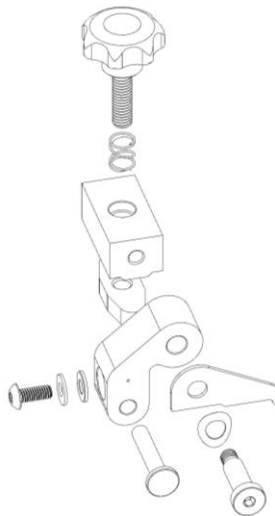
The parts in the RH and LH Flip Stops are the same.
So, changing the RH Flip Stop as provided to a LH is simple!

Using the 3 mm hex key provided, loosen and remove the Shoulder Screw holding the Flip Stop Arm, Cursor and Disc Spring in place.

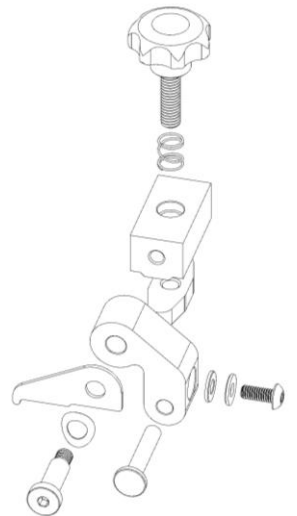
Then, reverse the Arm and Cursor and reassemble with the Disc Spring as shown and re-tighten the Shoulder Screw firmly.

Finally, using the 2.5 mm hex key provided, remove the Calibration Rod and re-insert as shown.

696-027 Rev. D



LH Flip Stop



RH Flip Stop

TSO™ PRODUCTS

Flip Stop, TPG Series, Reversible LEFT / RIGHT Hand 61-277 A

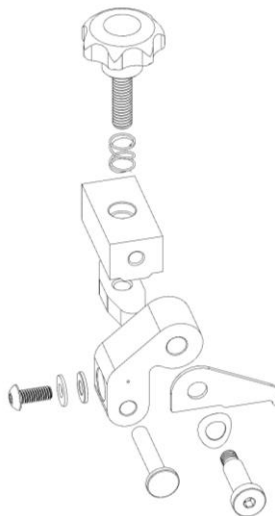
The parts in the RH and LH Flip Stops are the same.
So, changing the RH Flip Stop as provided to a LH is simple!

Using the 3 mm hex key provided, loosen and remove the Shoulder Screw holding the Flip Stop Arm, Cursor and Disc Spring in place.

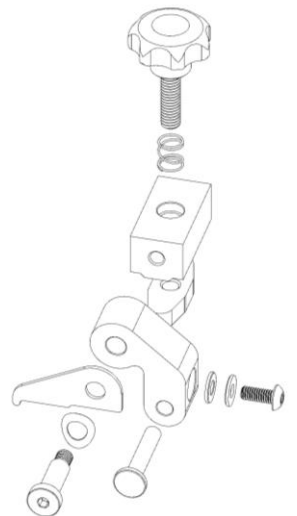
Then, reverse the Arm and Cursor and reassemble with the Disc Spring as shown and re-tighten the Shoulder Screw firmly.

Finally, using the 2.5 mm hex key provided, remove the Calibration Rod and re-insert as shown.

696-027 Rev. D



LH Flip Stop



RH Flip Stop